

# Bayfield North Watershed Report Card 2018



## Grades:

- A – Excellent
- B – Good
- C – Fair
- D – Poor
- F – Very Poor

## Forest Conditions



Grade:

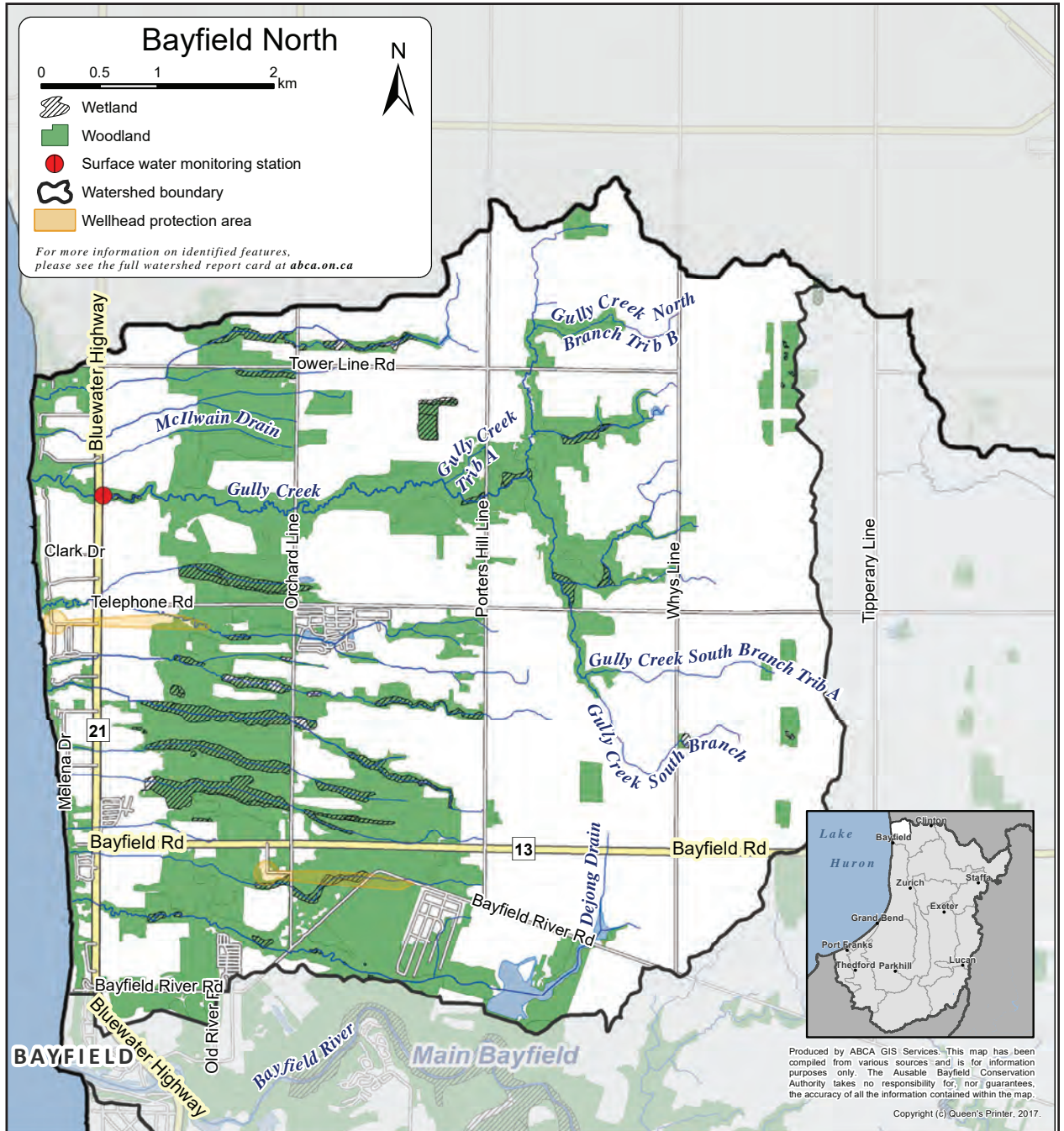
**B**

## Surface Water Quality



Grade:

**C**



Report cards give residents information to protect and enhance watershed resources.

Report card standards were developed for consistent reporting across Ontario.

## Top action needed to enhance this watershed:

- Protect existing woodlots and replant areas affected by forest pests.

*Visit back page for more actions.*



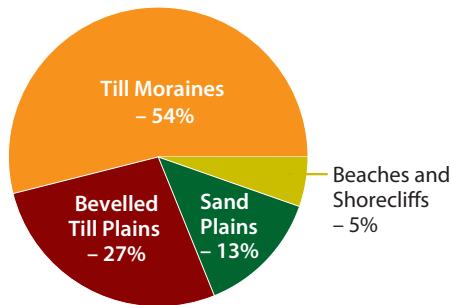
# Watershed Features



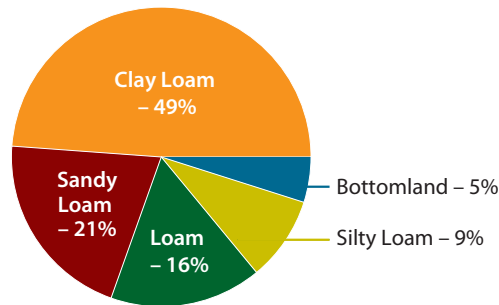
Area: 40 km<sup>2</sup>

Municipalities: Central Huron

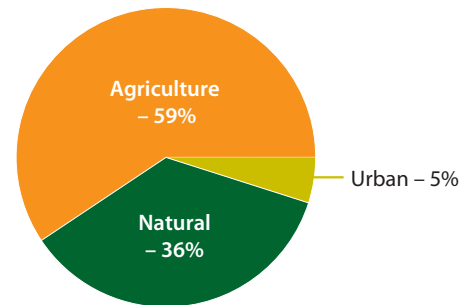
Geology, soil type, and land use help explain surface water and groundwater quality and forest conditions.\*



Geology (Chapman and Putnam 1984)



Soils (County Soils Maps 1951-1991)



Land Use (OMAFRA 2015)

## Fishable

### Fish:

- There is potential for coldwater fish habitat in Gully Creek.
- There is important habitat for fish species at risk.

### Species at Risk:

- One bird, three reptiles, two fishes, and one plant.\*

## Did you know?

A canker fungus is causing the Butternut tree, a member of the Walnut family, to decline. Birds, squirrels and other small mammals feed on the nuts that this tree produces.



## Swimmable at Local Lake Huron Beaches



- To reduce the risk of illness, refrain from swimming for 48 hours after heavy rainfall, especially when you can't see your feet in waist-deep water.
- Water quality at public beaches is monitored from June to Labour Day.
- Find results from your local public health unit and [theswimguide.org](http://theswimguide.org)

## Drinkable

### Municipal Drinking Water Sources

- Lake Huron (surface water) is the source of raw water for municipal drinking water for many local towns.
- Groundwater from wells is the municipal drinking water source in Brucefield, Clinton, Seaforth, Zurich, and Varna.
- Learn about your municipal well or intake at this link: [sourcewaterinfo.on.ca](http://sourcewaterinfo.on.ca)

### Private Wells

- Test your well water in spring and autumn.
- Visit [ogwa.ca/Well-Wise-Testing](http://ogwa.ca/Well-Wise-Testing) for well protection tips.

### Groundwater Conditions



- A provincial monitoring well does not exist in this watershed, but groundwater may be similar to a deep provincial monitoring well near Bayfield. Concentrations of nitrate and chloride are better than the standard for nitrate and guideline for chloride at that deep provincial monitoring well.
- Your well water quality may differ from that of provincial monitoring wells.

\* Go to [abca.ca](http://abca.ca) for the complete Watershed Report Card to learn more.

# Watershed Grades



## Forest Conditions



Indicator	Description	Result		2017 Grade	
		2012	2017	Bayfield North	Entire ABCA
<b>Forest cover</b>	<ul style="list-style-type: none"> <li>Forest cover is a percentage of a watershed that is forested.</li> <li>An <b>A</b> grade is forest covering more than 35% of a watershed.</li> </ul>	30.0%	30.5%	B	D (14.2%)
<b>Forest interior</b>	<ul style="list-style-type: none"> <li>Forest interior is the percentage of a watershed with forest cover that is at least 100 metres from the forest's edge.</li> <li>Some birds need this area to nest and breed.</li> <li>An <b>A</b> grade is forest interior covering more than 11.5%.</li> </ul>	9.0%	9.0%	B	D (3.3%)
<b>Streamside cover</b>	<ul style="list-style-type: none"> <li>Streamside cover is the percentage of the 30-metre area on both sides of open streams that is forested.</li> <li>An <b>A</b> grade is forest covering more than 57.5% of this streamside area.</li> </ul>	63.4%	63.9%	A	C (32.6%)



## Overwinter Vegetative Cover on Agricultural Lands

- Agriculture comprises 59 per cent of the land use in this watershed.
- A minimum of 30 per cent of overwinter vegetative cover on agricultural lands might be expected if fields were in a corn-soybean-wheat rotation.
- Overwinter vegetative cover on agricultural lands ranged from 17 to 24 per cent, in this watershed, in recent aerial photography.\*



## Surface Water Quality



Indicator	Description	Result		2017 Grade	
		2012	2017	Bayfield North	Entire ABCA
<b>Total phosphorus</b>	<ul style="list-style-type: none"> <li>Total phosphorus is a nutrient. It enhances plant growth. It contributes to excess algae and low oxygen in streams.</li> <li>An <b>A</b> grade is a 75th-percentile* total phosphorus concentration of less than 0.020 mg/L.</li> </ul>	NA	0.042 mg/L	C	D (0.073)
<b>E. coli (Escherichia coli)</b>	<ul style="list-style-type: none"> <li><i>E. coli</i> are bacteria found in human and animal waste. Their presence indicates water may contain other disease-causing organisms.</li> <li>An <b>A</b> grade is a geometric-mean* <i>E. coli</i> concentration of no more than 30 colony forming units (cfu) per 100 mL.</li> </ul>	177 cfu/100 mL	148 cfu/100 mL	C	C (104)
<b>Benthic invertebrates</b>	<ul style="list-style-type: none"> <li>Benthic invertebrates are small animals, without backbones, that live in stream sediments.</li> <li>Family Biotic Index (FBI) summarizes the numbers and types of these animals in a sediment sample. Values, from 1 (healthy) to 10 (degraded), reflect stream health.</li> <li>An <b>A</b> grade is an average FBI value of no more than 4.25.</li> </ul>	5.26	4.96	B	C (5.59)

\* The complete *Ausable Bayfield Watershed Report Card* at [abca.ca](http://abca.ca) has information on 2007 grades, definitions (such as 75th percentile and geometric mean), methods, and results.

# Next Steps

## How can you help?

### You can:

- Look for areas for planting and protection – look for ‘save, seed, and steward’ opportunities on your property.

### Your community can:

- Continue to implement practices to improve soil health (e.g., plant cover crops and reduce tillage).

### Local agencies can:

- Continue to monitor the environmental and economic effectiveness of rural best management practices (BMPs) completed in this area.

## Take action!

We can help you to develop an individual action plan for your property. Interested in monitoring your watershed? Call us to find out how.




## Thumbs up!

The Ontario Soil and Crop Improvement Association and the Ontario Ministry of Agriculture, Food and Rural Affairs have helped landowners in Gully Creek install 44 water and sediment control basins since 2008.

## Grants

*Funding may be available to help you plant trees, control erosion, and improve water quality.*



*Call us to find out more.*



## Links to the Great Lakes

No matter where you live in the watershed, you are linked to the Great Lakes.

We rely on the lake as a source of drinking water, economic activity, and recreation.

Your personal action can make a difference for Lake Huron.

Visit [lakehuroncommunityaction.ca](http://lakehuroncommunityaction.ca)



Ausable Bayfield Conservation Authority (ABCA), 71108 Morrison Line, RR 3 Exeter, ON • N0M 1S5 • Phone: 519-235-2610 • Toll-free: 1-888-286-2610 Facsimile: 519-235-1963 • E-mail: [info@abca.ca](mailto:info@abca.ca) • Website: [abca.ca](http://abca.ca)

Visit [abca.ca](http://abca.ca) for the complete *Watershed Report Card* for all Ausable Bayfield watersheds.